



Amadeo V nano

Cost-effective full X-ray system for small animal practices

Space-saving X-ray system for standard wall socket outlet operation with floating table top

The X-ray system Amadeo V nano was specially designed for small animal practices and meets all requirements of modern veterinary medicine. The table is equipped with a floating table top.

The high-frequency generator is integrated directly into the X-ray table to save space. The compact design allows installation in the tightest of spaces. The powder coating makes the unit insensitive to impact damage and easy to clean.

The *dicomPACS® DX-R* control console takes over all functions for the operation of the X-ray system (except for the AX version): from the control of the X-ray generator to the finished, qualitatively excellent, finding image.

The Amadeo V-DR nano X-ray systems are available in three options:

- **Amadeo V-DR nano** with built-in CsI X-ray detector 17" x 14" (active area 43.3 x 35.5 cm)
- **Amadeo V-DR nano** with built-in CsI X-ray detector 17" x 17" (active area 43.2 x 43.2 cm)
- **Amadeo V-AX nano** with film or CR cassettes or existing DR system without generator control



System benefits

Economical: can be used with a standard wall socket (5.6 kW/220V) – no major reconstruction work necessary

Comfortable: floating tabletop with silent brakes – generous movement

Straightforward: rotatable light-beam diaphragm with LED lighting/timer – can be switched on and off by foot switch

Compact, small and space-saving – 220V high frequency generator integrated directly in the X-ray table

Efficient: integration into your existing patient management system – patient data at the push of a button (except AX version)

Excellent: high-quality X-ray detector based on a caesium iodide (CsI) scintillator – top image quality even at low X-ray doses

Optimal: removable grid for perfect image quality

User friendly: intuitive OR Technology acquisition software *dicomPACS® DX-R* including free special measuring functions

Efficient: integration into your existing practice management system - patient data at the touch of a button (except AX version)

Fast: shortly after taking the shot (6 - 8 seconds), the X-ray image is already available for viewing and diagnostic evaluation

Cleverly designed: integrated X-ray positioning guide (for examinations of cats and dogs)

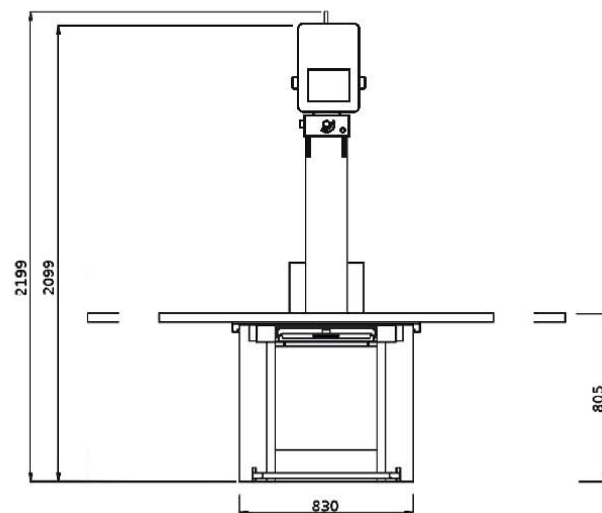
Safe: clamps for attaching restraints – staff can leave the controlled area during the shot



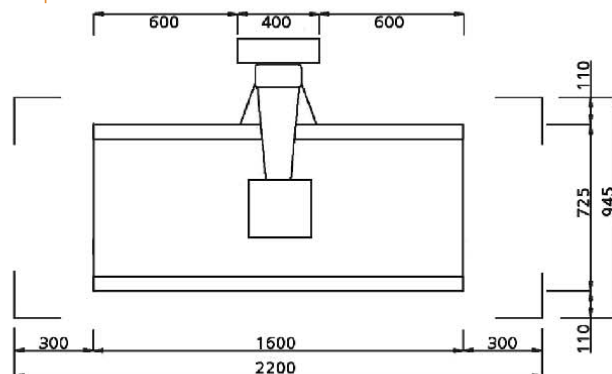


Measurements

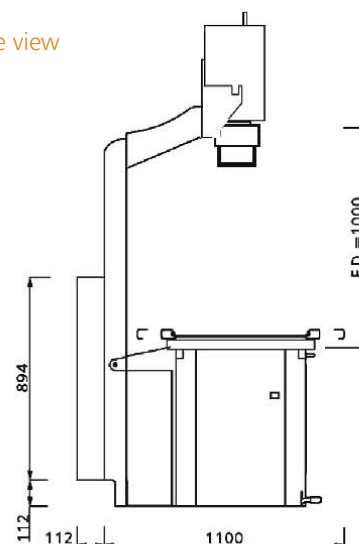
Front view



Top view



Profile view



More information about
Amadeo V-DR nano
you can be found here:
www.or-technology.com



A short product video of the
Amadeo V nano can be found
at [www.or-technology.com/
amadeo-v-nano-video](http://www.or-technology.com/amadeo-v-nano-video)

Advantages of professional acquisition software

- Modern graphical user interface (GUI) adaptable to almost any language, **touchscreen** operation – to ensure quick and efficient work and a smooth workflow
- Capture of patient data via **DICOM Worklist**, **BDT/GDT**, **HL7** or other protocols – data may also be captured manually
- Use of **DICOM Procedure Codes** for the transfer of all relevant examination data directly from the connected patient management system (HIS/RIS)
- Freely configurable** body parts with more than **200 projections** and numerous possible adjustments in veterinary medicine already included
- Safe and fast **registration of emergency patients** allowing the user to **switch between examinations** of a patient, for instance to avoid having to re-position the patient frequently
- Allows the user to **subsequently add images** to an examination, even after that examination has already been completed
- Special tools for veterinary medicine, such as an extra dialog box for patient and owner data, **integrated hip dysplasia measuring**, **MMP**, **TTA**, **TPLO** and **vertebral heart score (Buchanan)**, **special image filters**, **multi-generator operation** for alternating between mobile and stationary X-ray systems and much more...
- Fully **integrated radiographic positioning guide** for each examination incl. comprehensive notes, photos and correct X-ray images
- Suited for use in dental medicine, e.g. with a digital dental sensor or a dental CR system



Standard components of the **Amadeo V-DR nano**

X-ray stand with table

- Floating table system with generous travels and very quiet brakes
- Large tabletop (160 x 72.5 cm) with scratch-resistant, dose-optimised tabletop
- At the table fronts 2 pcs. each fixing clamps for holding ropes
- table height 80,5 cm
- X-ray stand with fixed FFA = 100 cm
- Collimator with LED lighting and timer
- Stable and durable design of all components
- Hand switch, 2-stage
- Weight approx. 180 kg

HF generator

- Nominal power 5,6 kW
- 40 kVp - 125 kVp, in 1 kVp steps
- Rotatable collimator
- Power 220-240 V single-phase (standard socket)

X-ray tube 125 kVp

- Dual focus tube, focal spot 0.6 / 1.8 mm
- Fixed anode X-ray tube

Direct radiography flat panel detector 35 cm x 43 cm*

- Excellent image quality even on low dosage
- Scintillator based on amorphous Silicon (a-Si) with Caesium Iodide (CsI) - thick version for higher DQE
- Pixel pitch 154 µm

Direct radiography flat panel detector 43 cm x 43 cm*

- Excellent image quality even on low dosage
- Scintillator based on amorphous Silicon (a-Si) with Caesium Iodide (CsI) - thick version for higher DQE
- Pixel pitch 154 µm

Operation by *dicomPACS*®DX-R acquisition station

Mini PC with 24" touch screen monitor (1,920 x 1,080 Pixel) including *dicomPACS*®DX-R acquisition and diagnostic software with modern graphical user interface including basic software package and integrated X-ray positioning guide provides information on the correct adjustment technique for each examination, including:

- *dicomPACS*®DX-R Generator Control
- *dicomPACS*®DX-R DICOM Send SCU inkl. MPPS and Storage Commitment
- *dicomPACS*®DX-R DICOM Worklist SCU + *dicomPACS*® Connect
- *dicomPACS*®DX-R DICOM Patient CD
- *dicomPACS*®DX-R Cognition Optimised Processing

Fixing clamps

Clamps for holding ties to fix the animal in place so that staff can leave the controlled area during the shot

Warranty

24 months warranty on the mechanical parts, 12 months for the monoblock system incl. tube

Optional Components

- Generator control
- Metal box on the tube arm to accommodate the PC
- Monitor arm

* Description for XenOR detectors, further versions on request





www.or-technology.com | **X-perts in X-ray**



OR Technology (Oehm und Rehbein GmbH), 18057 Rostock, Germany, Neptunallee 7c
Tel. +49 381 36 600 500, Fax +49 381 36 600 555
www.or-technology.com, info@or-technology.com

Info hotline: +49 381 36 600 600



[Stamp of distribution partner]